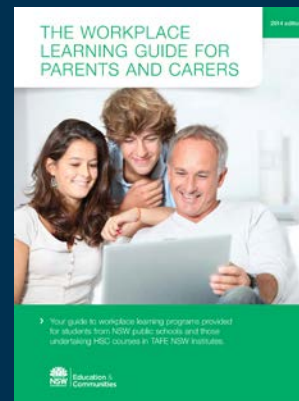




Additional information for parents and carers supporting their child in workplace learning

Please note: the page reference after each question refers to the page in the above Guide.



Can my child do work experience in another State or territory? (see page 5)

Most placements will be within commuting distance of home. It is rare for an interstate placement to be warranted unless the school is located on or near an interstate border or the industry does not exist in NSW. If you are considering an interstate placement, you should first contact the school or relevant TAFE NSW Institute. Interstate placements may need additional documentation and/or take longer to plan.

Are there any prohibited activities for workplace learning? (see page 5)

Yes. Some activities are completely prohibited e.g. *working on a roof*, while other activities have conditions attached. There are restrictions on the operation of machinery and equipment, the service of alcohol, work on construction sites and adventure or sporting activities in industries such as tourism.

Students are not allowed to undertake activities requiring a licence (e.g. a driver's licence), permit or certificate of competence unless they already hold the relevant licence, certificate or permit. Even then, the activity must relate directly to the learning activities of the placement. Employers must list these activities on the Student Placement Record prior to placement approval.

Please note: students are not expected to drive their own vehicles while undertaking activities on behalf of the host employer. They should not be directed to drive the employer's vehicles or any client's vehicles while they are on a workplace learning experience. Any driving of vehicles is expected to be rare, and must be detailed on the Student Placement Record prior to placement approval. Students need to be reminded that it is against the law to use a mobile phone whilst driving.

Some higher risk industries will require a student to undertake training prior to their work placement. For example, all students doing workplace learning in the construction industry must complete the general construction induction training (GIT) as a prerequisite to placement.

For the full list of prohibited activities, go to [Activities that are prohibited or have special consideration](#).

The school, TAFE or a Work Placement Service Provider can also advise you if you have any further queries.

What insurance and indemnity provisions are in place for approved workplace learning programs (see page 6)

The Department has specific insurance and indemnity arrangements for students injured while on approved workplace learning which also includes travelling directly to and from the workplace. **Parents and carers need to first finalise any medical accounts and then claim from their Medicare and private health funds** before a request can be made to the Department to cover any outstanding *out of pocket* expenses.

If a student sustains a significant injury as a result of participating in an approved workplace learning program, the Department ensures the student will not be worse off than someone undertaking paid employment who sustains the same injury and who is covered by the Workers Compensation Act. For that reason, the Department uses the NSW Workers Compensation Act as a benchmark to compensate students for medical treatment and rehabilitation costs. Because students are not being paid, compensation does not include loss of income. Similarly to paid employees, students also have a right under common law to seek compensation if it can be established that

the injury was caused by the negligence of the host employer, the Department or a third party
Please note: These insurance provisions only apply to workplace learning programs approved by the school, or where applicable, approved by the TAFE NSW Institute, or by the private or community registered training organisation for external placements only. **Approval must be recorded on the Student Placement Record prior to student attendance at placement.**

The private or community Registered Training Organisation (RTO) will provide details of insurance arrangements for any student placements within their own organisation. However, your son or daughter's school continues to have a duty of care while he or she is participating in a course conducted by a private or community RTO that has been contracted to deliver a course for the students. They liaise regularly with schools when arranging work placements for school students.

In terms of workplace learning, what does the Department regard as normal business hours? (see page 6)

Normal business hours are the hours we generally know as 9-5pm. This may vary an hour either side of this time and your school, TAFE, private or community RTO will inform you of the timeframe when staff are contactable for supporting your child in a workplace learning situation.

Who can be the alternative nominated contact for my child outside normal business hours? (see page 6)

The contact must be an adult person and cannot be the host employer or any of their employees. This is to ensure the student has a contact who is independent of the host workplace.

What responsibilities will my child have in the workplace under work health and safety legislation? (see page 6)

Under the *Work Health and Safety Act 2011* (NSW) the definition of 'worker' includes 'a student gaining work experience'. Under the Act students must:

1. take reasonable care for their own health and safety,
2. take reasonable care that what they do, and what they do not do, does not adversely affect the health and safety of others,
3. comply with reasonable instructions about health and safety given by anyone on behalf of the business, and

4. co-operate with reasonable workplace health and safety policies and procedures that they have been told about.

Penalties are possible for breaching these obligations.

Where can I get further information about Work Health and Safety legislation for my child? (see page 6)

In Working Order is a tool kit for parents of young workers as well as educators, employers, and supervisors. It will assist in developing young people's understanding of:

- *Workplace safety rights and responsibilities.*
- *Recognising, assessing and managing workplace hazards.*
- *Communication and negotiation skills.*

In Working Order contains resources and useful links to help young workers develop strategies and skills to prevent injury and promote workplace safety: [In Working Order](#).

Additional information about health and safety for **young workers under 25** and their employers can be found at: [Young workers](#).

Who can I contact to discuss aspects of my child's workplace learning program? (see page 8)

1. In the first instance, contact your child's school as they have developed the program of learning for your child.
2. You can also contact the Senior Pathways Adviser responsible for workplace learning at the local office of the Department. Contact details can be obtained from your child's school.
3. The Workplace Learning Adviser, Senior Pathways in the State office of the NSW Department of Education and Communities can be contacted on (02) 9244 5425.

Michael Hyam
Assistant Director
Secondary Education - Senior Pathways
Public Schools NSW
NSW Department of Education & Communities
April 2014